



## SUSQUEHANNA REGIONAL TRANSPORTATION AUTHORITY

### Unaudited Financial Statement & Statistical Notes for October 2025

The accompanying financial statements are presented as of October 31, 2025, October is the fourth month in fiscal year 2026 and the beginning of the second quarter of the fiscal year. These statements provide a comprehensive analysis that includes performance against the approved fiscal year 2026 budget and year-over-year comparison with the prior fiscal year results.

#### Ridership

⬇️ Year to Date Ridership as of October 31 reflects a 3.2% overall reduction in trips as compared to last year. The change by transportation type is as follows.

- ⬇️ Fixed Route: 3.5% decrease in ridership compared to the prior year.
- ⬇️ Paratransit: 4.4% decrease compared to the prior year.
- ⬆️ Commuter Express: 1.8% increase compared to the prior year.
- ⬆️ Microtransit: 17.7% increase in ridership compared to the prior year.

#### Revenue

- ✅ Year to Date, Grant and Contract Income is \$1.0 million below budget because less subsidy has been required than the budget anticipated. Lower than budgeted spending on Operating Costs (Expenses) accounts for the savings.

#### Expense

- ✅ August expenses are less than the approved budget, by \$1.1 million, due to savings from purchased transportation and wages.
- ⬇️ Unfilled positions increased by 5 during the month to 54, which represents 7.8% of total positions approved.

#### Reserves

- OK The Authority's cash balance is consistent with its aim of having 180 days cash on hand.

#### Line of Credit

- ❤️ No draws have been made on the organization's lines of credit.

#### Capital Expenditure (over \$50,000)

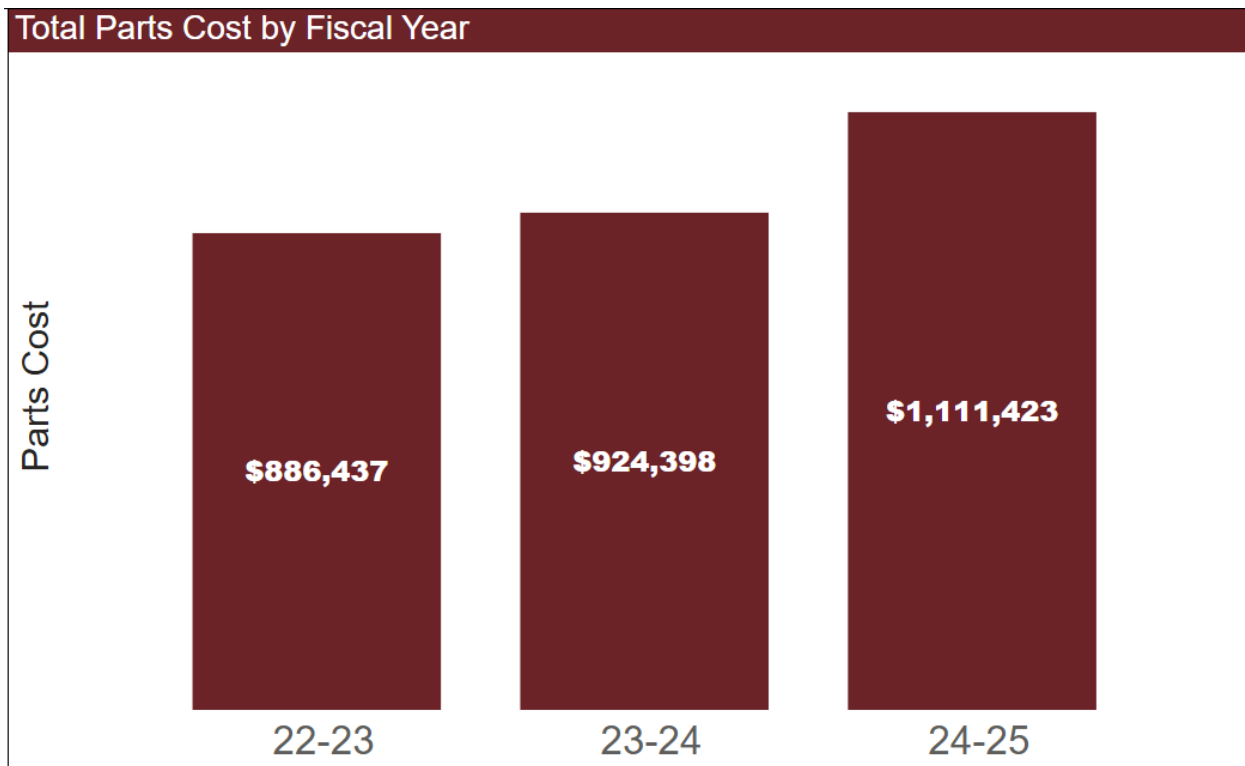
- Milton Facility Construction - \$656,869
- Harrisburg Facility - \$288,672
- Paratransit Vehicles - \$1,744,381

### Checks >\$150,000 issued under resolution #2531 exemption

➤	10/16/2025	Gray Builders	\$553,050.00	Milton Facility Construction
➤	10/30/2025	Gray Builders	\$196,688.70	Milton Facility Construction

### Featured Information

The Authority's maintenance software indicates a cumulative 25% increase in repair-part costs over the past two years. In addition, lead times for many critical components have grown significantly. These factors have substantially increased the effort required to keep vehicles in service and have made the constraints imposed by the Spare Ratio even more challenging. The graph below illustrates the cumulative repair costs for the entire Authority.



## Local Match Payments

**OK** The Authority has successfully secured all required local match funding to date, in compliance with federal and state grant requirements (See Table Below).

All information as of 11/17/2025

### Act 44/89 Local Match Requirement

Municipality	Requested Amount (request letter sent 7/31 )	Received Notification of Amount Approved	Status
Adams County	\$78,535	\$78,535	Paid through 12/31/25
Gettysburg Boro	\$4,862	\$4,862	Paid through 12/31/25
York County	\$761,463	\$761,463	Paid Through 11/30/2025
Cumberland County	\$471,609	\$471,609	Paid through 12/31/25
Dauphin County	\$529,950	\$529,950	Paid through 12/31/25
City of Harrisburg	\$407,223	\$407,223	Paid through 12/31/25

### Local Billings tied to other grants

Franklin County	\$26,195	Approved	Invoice January 2026
Northern Microtransit	\$54,827		Paid through 12/31/25

**Susquehanna Regional Transportation Authority**  
**Income Statement**

For The Period Ended October 31, 2025

		Period To Date		Year To Date				Year To Date
		Actual	Current Budget	Actual	Current Budget		Budget Variance	October 31, 2024
REVENUE								
	Operating Rev	\$ 2,279,571	\$ 2,216,879	\$ 8,728,304	\$ 8,867,516	\$ (139,212)	\$ 7,578,862	
	Grant/Contract	\$ 3,459,983	\$ 3,567,091	\$ 12,238,103	\$ 14,268,364	\$ (2,030,261)	\$ 11,033,302	
TOTAL REVENUE		\$ 5,739,554	\$ 5,783,970	\$ 20,966,407	\$ 23,135,880	\$ (2,169,473)	\$ 18,612,164	
EXPENSES								
	Wages	\$ 1,417,856	\$ 1,333,333	\$ 4,840,061	\$ 5,333,332	\$ 493,271	\$ 4,663,361	
	Benefits	\$ 560,603	\$ 474,205	\$ 2,313,044	\$ 1,896,820	\$ (416,224)	\$ 2,144,260	
	Services	\$ 433,688	\$ 337,830	\$ 1,380,439	\$ 1,351,320	\$ (29,119)	\$ 909,084	
	Fuel	\$ 172,442	\$ 158,333	\$ 637,872	\$ 633,332	\$ (4,540)	\$ 641,549	
	Tires	\$ 12,960	\$ 8,333	\$ 45,042	\$ 33,332	\$ (11,710)	\$ 35,044	
	Parts, Material	\$ 35,402	\$ 49,231	\$ 167,307	\$ 196,924	\$ 29,617	\$ 212,121	
	Utilities	\$ 122,686	\$ 122,369	\$ 438,765	\$ 489,476	\$ 50,711	\$ 362,307	
	Casualty and Li	\$ 53,114	\$ 40,484	\$ 169,380	\$ 161,936	\$ (7,444)	\$ 142,780	
	Purchased Tra	\$ 3,064,131	\$ 3,175,000	\$ 11,520,327	\$ 12,700,000	\$ 1,179,673	\$ 10,169,479	
	Miscellaneous	\$ 42,057	\$ 53,514	\$ 163,338	\$ 214,056	\$ 50,718	\$ 148,667	
	Leases and Rer	\$ 209,815	\$ 10,010	\$ 241,119	\$ 40,040	\$ (201,079)	\$ 37,778	
	Passed Throug	\$ 27,536	\$ 21,328	\$ 91,516	\$ 85,312	\$ (6,204)	\$ 138,133	
TOTAL EXPENSES		\$ 6,152,291	\$ 5,783,970	\$ 22,008,210	\$ 23,135,880	\$ 1,127,670	\$ 19,604,563	
TOTAL NON OPERATING GRANT INCOME **		\$ 927,377	\$ 439,563	\$ 3,674,531	\$ 1,758,252	\$ (1,916,279)	\$ 2,015,374	
TOTAL NON OPERATING GRANT EXPENSES **		\$ 929,088	\$ 439,146	\$ 3,572,352	\$ 1,756,584	\$ (1,815,768)	\$ 2,152,740	
REE/(EER)		\$ (414,448)	\$ 417	\$ (939,625)	\$ 1,668	\$ (1,041,803)	\$ (1,129,764)	
CAPITAL REVENUES AND EXPENSES								
	Capital Grant I	\$ 2,614,668	\$ -	\$ 4,464,427	\$ -	\$ -	\$ 3,830,982	
TOTAL CAPITAL REVENUES AND EXPENSES		\$ 2,614,668	\$ -	\$ 4,464,427	\$ -	\$ -	\$ 3,830,982	
REE/(EER)		\$ 2,200,221	\$ 417	\$ 3,524,802	\$ 1,668	\$ (1,041,803)	\$ 2,701,218	
NET REE/(EER)		\$ 2,200,221	\$ 417	\$ 3,524,802	\$ 1,668	\$ (1,041,803)	\$ 2,701,218	

\*\*FindMyRide, GHP, UPMCO, ICB, Cambria Co MATP

**Susquehanna Regional Transportation Authority**  
**Balance Sheet**

**As of October 31, 2025**

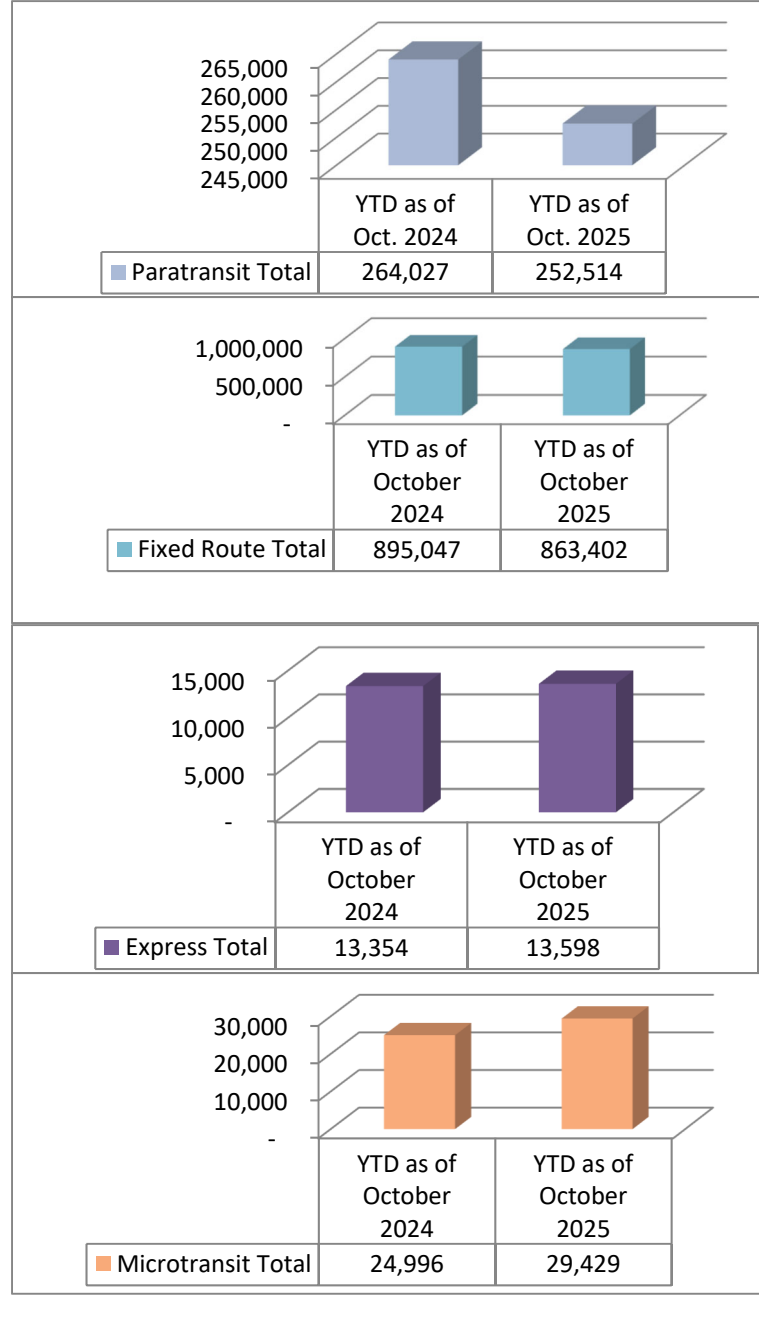
**ASSETS**

CURRENT ASSETS			
	Unrestricted Cash	\$ 18,783,502	
	Restricted Cash	\$ 779,636	
	Reserved Cash - Capital Projects	\$ -	
	Accounts Receivable	\$ 30,852,465	
	Materials & Supplies Inventory	\$ 1,506,732	
	Prepaid Expenses	\$ 663,776	
	Other Current Assets	\$ -	
TOTAL CURRENT ASSETS			\$ 52,586,112
FIXED ASSETS			
	Buildings and Improvements	\$ 107,921,004	
	Revenue Equipment	\$ 67,801,168	
	Tools and Equipment	\$ 5,545,487	
	Accumulated Depreciation	\$ (84,793,559)	
TOTAL FIXED ASSETS (NET)			\$ 96,474,100
TOTAL ASSETS			<u>\$ 149,060,213</u>

**LIABILITIES AND NET ASSETS**

CURRENT LIABILITIES			
	Accounts Payable	\$ 8,511,185	
	Accrued Leave and Payroll	\$ 2,027,425	
	Accrued Expenses	\$ 1,272,573	
TOTAL CURRENT LIABILITIES			\$ 11,811,183
DEFERRED REVENUE			
	Revenue Received in Advance	\$ 39,847,698	
TOTAL DEFERRED REVENUE			\$ 39,847,698
OTHER LIABILITIES			
	Capital Lease Obligation	\$ -	
	Current Notes Payable	\$ -	
	Consortium Buses	\$ -	
TOTAL OTHER LIABILITIES			\$ -
NET ASSETS			
	Unrestricted Equity	\$ 57,805,678	
	Restricted Equity	\$ 15,520	
	Capital Grants	\$ 39,580,134	
TOTAL NET ASSETS			\$ 97,401,332
TOTAL LIABILITIES AND NET ASSETS			<u>\$ 149,060,213</u>

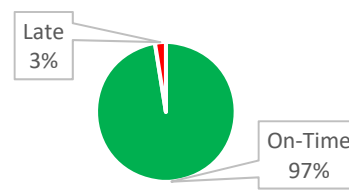
## OPERATIONS – October



## MAINTENANCE – October

### Preventative Maintenance

**\*\*FTA Standard = 80% On-Time**



**199 PMs Complete; 5 Overdue**

Adams – 8 Completed; 0 Overdue  
 Columbia – 8 Completed; 1 Overdue\*  
 Cumberland – 17 Completed; 0 Overdue  
 Dauphin – 36 Completed; 3 Overdue\*  
 Franklin – 9 Completed; 0 Overdue  
 Montour – 2 Completed; 0 Overdue  
 Northumberland – 22 Completed; 0 Overdue  
 Perry – 12 Completed; 0 Overdue  
 Union/Snyder – 15 Completed; 1 Overdue\*  
 York – 70 Completed; 0 Overdue

**\*Missed**

**^Power outages stopped mileage updates**

### Road Calls:

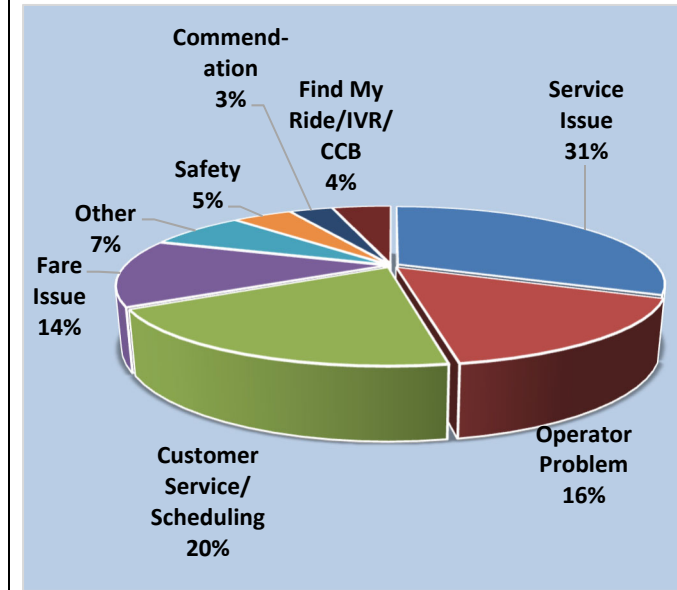
**\*Reporting of fare box road calls began 10/2025**

	Oct.* 2025	YTD FY2026	Oct. 2024	YTD FY2025
Mechanical	24	66	7	58
Non-Mech.	34	64	7	31

## SAFETY – October

	Oct. 2025	YTD as of Oct. 2025	Oct. 2024	YTD as of Oct. 2024
Preventable	19	74	22	75
Non-Preventable	12	24	15	37
Passenger Injury	2	4	2	5
Employee Injury	6	13	1	22

## CUSTOMER COMPLAINTS – October



	Oct. 2025	YTD as of Oct. 2025	Oct. 2024	YTD as of Oct. 2024
Total Complaints	246	1,013	190	664

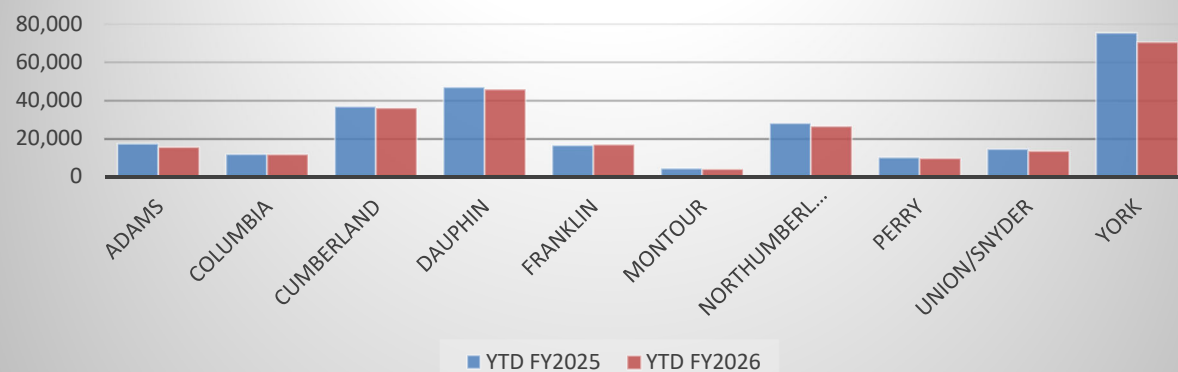
## MARKETING – October

	Oct. 2025	YTD FY2026	Oct. 2024	YTD FY2025
PR Exposures	5	37	13	21
Outreaches	5	27	3	20
Views	147,864	598,836	122,835	483,589
Event Count	381,406	1,543,066	332,392	1,298,632
Users	21,696	89,939	23,708	91,125
Bikes	3,130	12,781	3,390	12,872

## Paratransit Ridership - YTD

	YTD FY2025	YTD FY2026
<i>Adams</i>	17,544	15,811
<i>Columbia</i>	12,061	12,056
<i>Cumberland</i>	36,971	36,177
<i>Dauphin</i>	47,093	45,945
<i>Franklin</i>	16,767	17,193
<i>Montour</i>	4,673	4,314
<i>Northumberland</i>	28,260	26,689
<i>Perry</i>	10,428	9,957
<i>Union/Snyder</i>	14,833	13,801
<i>York</i>	75,397	70,571

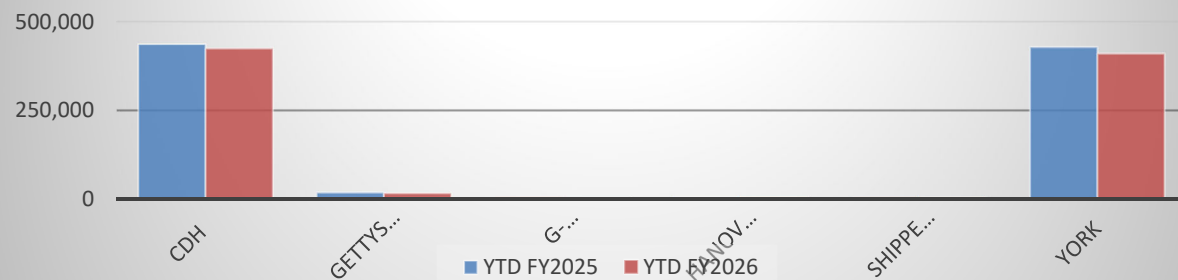
## Paratransit Ridership - YTD



## Fixed Route Ridership -YTD

	YTD FY2025	YTD FY2026
<i>CDH</i>	436,512	424,305
<i>Gettysburg</i>	18,526	16,887
<i>G-burg/Hanover Connector</i>	2,966	2,055
<i>Hanover</i>	5,756	5,530
<i>Shippensburg</i>	3,144	4,729
<i>York</i>	428,143	409,896

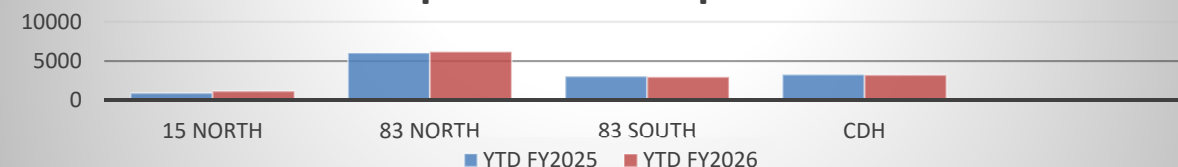
## Fixed Route Ridership - YTD



## Express Ridership - YTD

	YTD FY2025	YTD FY2026
<i>15 North</i>	939	1,182
<i>83 North</i>	6,060	6,203
<i>83 South</i>	3,070	2,979
<i>CDH</i>	3,285	3,234

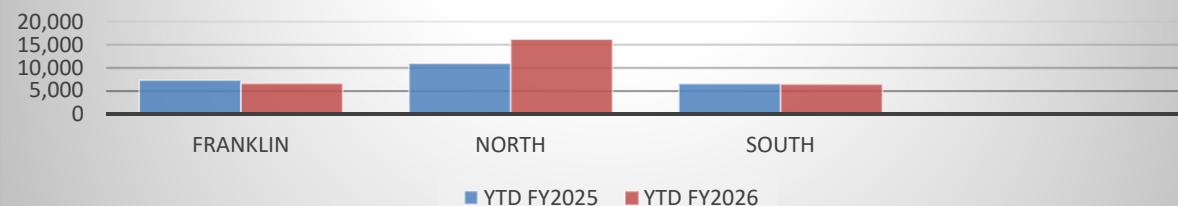
## Express Ridership - YTD



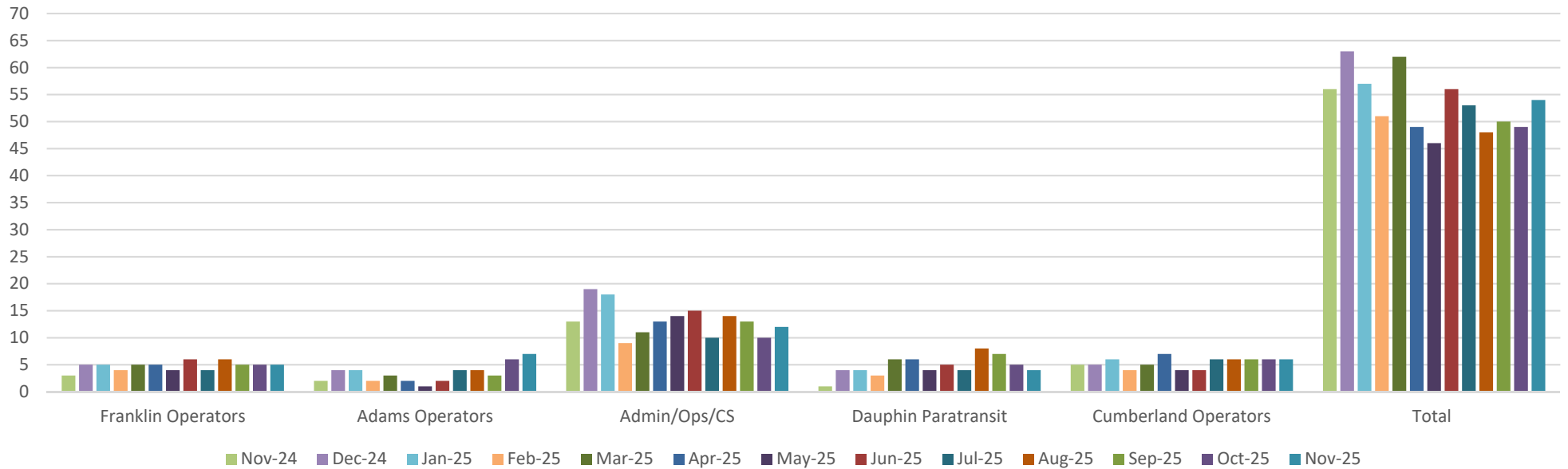
## Microtransit Ridership – YTD

	YTD FY2025	YTD FY2026
<i>Franklin</i>	7,366	6,699
<i>North</i>	11,011	16,224
<i>South</i>	6,619	6,506

## Microtransit Ridership - YTD



## Top 5 Divisions- Open Positions



November 2025 (Prepared 11/14/2025)	FMLA/LOA	Approved Positions	Current employees	Number approved openings
Adams Operators	2	35	28	7
Administrative/Operations Support/Customer Service Rep	3	164	152	12
Columbia Operators	-	17	15	2
Cumberland Operators	2	43	37	6
Dauphin Fixed Route	2	97	93	4
Dauphin Info Specialists	-	2	2	-
Dauphin Maintenance (Mechanics, Serviceperson)	-	25	23	2
Dauphin Paratransit	3	26	22	4
Franklin Operators	2	31	26	2
Montour Operators	-	9	8	1
Northumberland Operators	-	28	26	2
Perry Operators	1	23	21	2
Shippensburg Operators	-	2	2	-
Union/Snyder Operators	1	34	33	1
York Express	-	7	6	1
York Fixed Route	-	63	63	-
York Maintenance (Mechanics and Porters)	-	20	18	2
York Paratransit	2	61	58	3
<b>Totals – November 2025</b>	<b>18</b>	<b>687</b>	<b>633</b>	<b>54</b>