



# **July 15, 2025**

# **Construction Opportunity Forum**

*Capital Region Operations & Maintenance Facility and Transfer Center*

# Program Overview

---

- Welcome and Introductions
- Overview of rabbittransit
- Capital Region Operations & Maintenance Facility and Transfer Center Project
- Key compliance items on Federally-funded projects
- Capacity-building Session
- Networking

# Welcome and Introduction

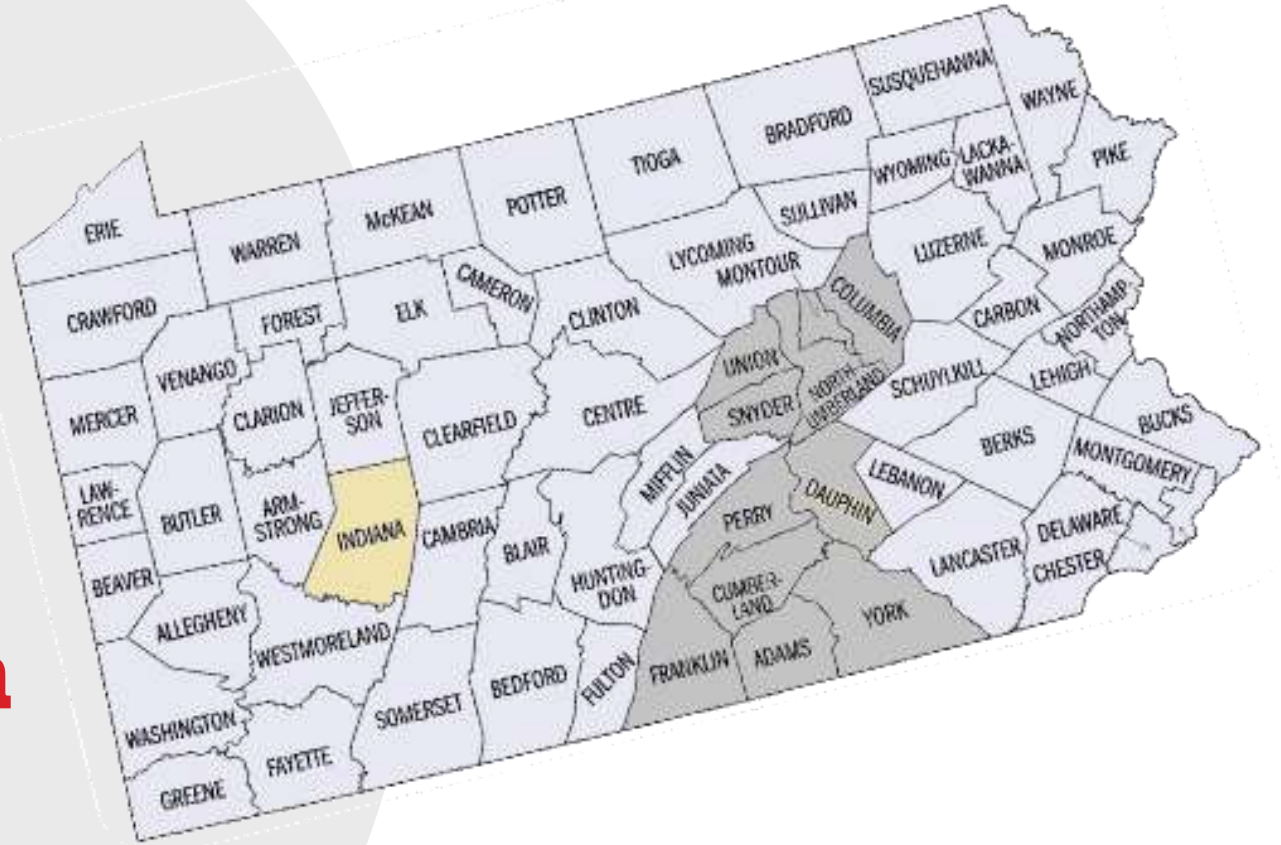
**Richard Farr, Executive Director  
Susquehanna Regional Transportation  
Authority**



Susquehanna Regional Transportation Authority

## Public Transportation

In Adams, Columbia, Cumberland,  
Dauphin, Franklin,  
Harrisburg City, Montour,  
Northumberland, Perry, Snyder,  
Union and York





## SERVICES

Fixed Route

Paratransit  
(Shared Ride)

rabbitEXPRESS

Microtransit  
(Stop Hopper)

Contract Services



## # OF TRIPS

3,329,568

**Fixed Route:**  
2,535,243

**Paratransit:**  
727,021

**Microtransit:**  
67,304



## # OF EMPLOYEES

617

**Fixed Route  
Operators:**  
152

**Paratransit  
Operators:**  
275

**Maintenance Staff:**  
58

**Admin/Support Staff:**  
132



## # OF VEHICLES

435

**Fixed Route:**  
113

**Paratransit:**  
268

**Microtransit:**  
15

**Support:**  
39



# Why is a New Facility Needed?

- Challenges with current facility:
  - Over-capacity
    - Buses stored outside
    - No parking for employees
  - Out-of-date
    - Maintenance bays too small for current fleet
    - Bus storage areas too narrow for current fleet
  - Inefficiencies in energy consumption
  - Safety & security concerns
    - Security gate gaps, property perimeter weaknesses
    - Fence manually operated



# Transfer Center Objectives

- Improved Reliability
- Pulse System
- Timed Transfers
- Adequate Number of Bus Bays
- Support Regional Connections
- ADA - Accessible and identified boarding locations
- Customer Service
- Employee Support/Restrooms
- Goodwill Partnership
  - Employment Readiness





# Economic Stimulation

- Job Creation
  - 3 Construction Bid Packages – 8 contracts, \$150M, 3 years
- Small Business and Prime Contractor Opportunities
- Public Investment in Transit, safety, clean water, Cameron Street, City Property





# Details of Upcoming Project

---

**Thomas A. Bergbauer, Jr., PE**  
Johnson, Mirmiran & Thompson, Inc.



---

# **Capital Region Operations & Maintenance Facility and Transfer Center**



# Current Site



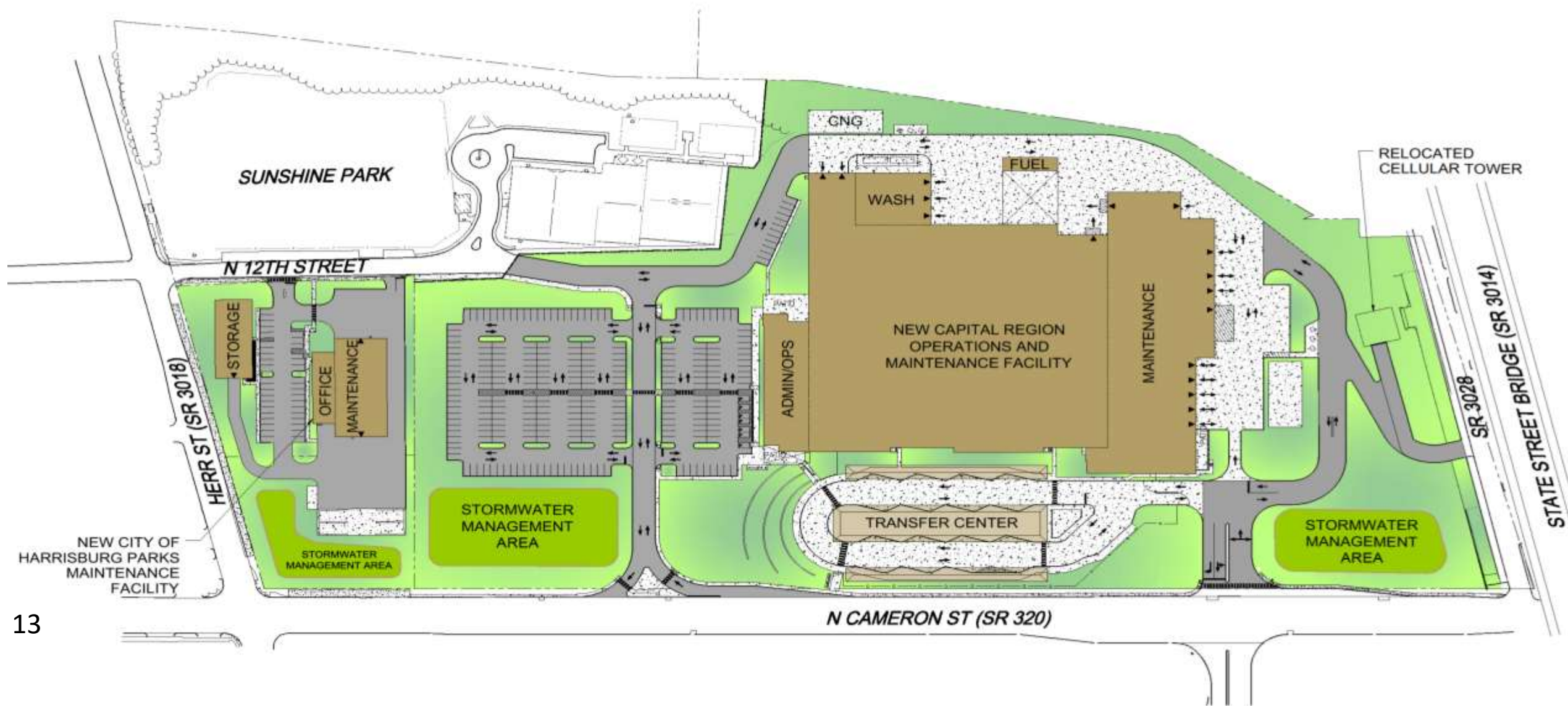


# Project Scope

---

- New Campus at existing Cameron Street Location
- New Administration Building with Training and Dispatch
- New Operations Building with Operator spaces
- New Storage Building
- New Maintenance Facility including Body Shop
- New Fueling and Wash Bays future-proofed for fleet transition
- New Passenger Transfer Center with Customer Service Kiosk
- New Bus Circulation and ingress/egress

# Proposed 900 Block – North Cameron Street



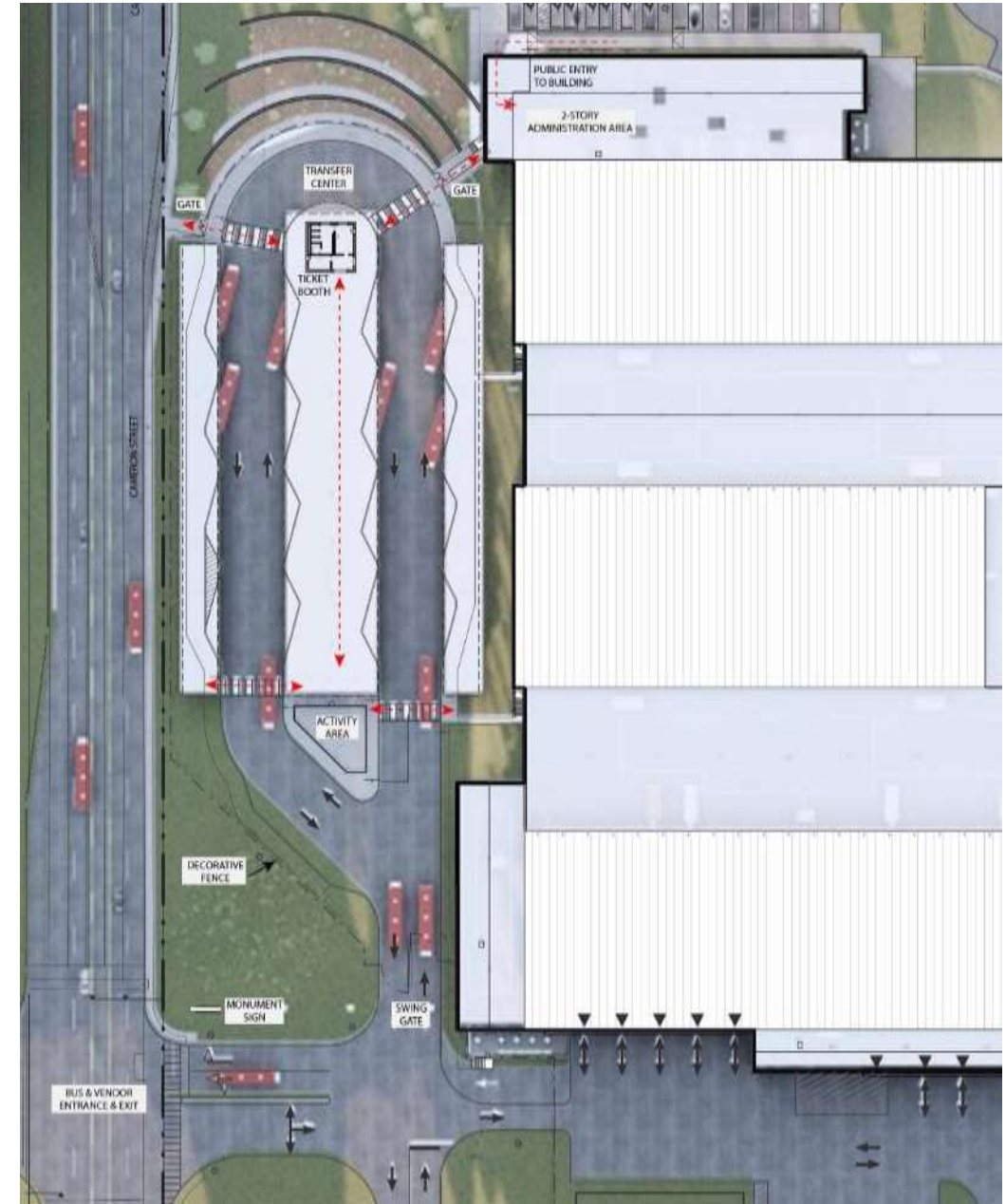






# Transit Benefits

- Improved Safety
  - Modern engineered structures
  - Buildings above flood level with flood emergency egress
  - State of the art worker amenities
  - Upgraded fire safety
  - Improved Traffic Operations on Cameron and Herr Streets
- Improved Operations
  - New Transfer Center location with adequate space and separation of passenger cars
  - Improved regional connections and run time schedules



# Community Benefits

- Cameron Street Corridor Viewshed/Gateway
- Sunshine Park Visual Surveillance
- New City Parks & Recreation Maintenance Facility
- Environmental Improvements:  
Underground Storage Tank removals, hazardous waste mitigation, separating storm and sanitary water, new Paxton Creek flood study, localized flood control





# Project Phases and Timing

## Phase 1

- **Early Action Demolition**
- Bid awarded and work commencing

## Phase 2

- **City of Harrisburg Parks Maintenance Facility**
  - *Site: 2.82 acres*
  - *Bldg: 20,250 gross sqft*
- Bid advertisement anticipated Summer 2025
- 4 construction packages \*

## Phase 3

- **Capital Region O&M Facility**
  - *Site: 19.94 acres*
  - *Bldg: 235,420 gross sqft*
- Bid advertisement anticipated early 2026
- 4 construction packages \*



# Pennsylvania Separations Act

---

- Enacted in 1913
- Also known as “multiple prime” project delivery
- Requires public institutions to issue separate bids for:
  - General Construction
  - Electrical
  - Plumbing
  - Heating, Ventilation, and Air Conditioning (HVAC)

# Key Compliance Considerations

**Allen Hollenbach**

Procurement Analyst

Susquehanna Regional Transportation Authority

**David Kilmer**

Director of Legislative Affairs

Susquehanna Regional Transportation Authority

# Key Compliance Considerations

- Procurement with rabbittransit
- Process for Sealed Bidding
- Davis Bacon
- Buy America
- Bonding/Insurance
- Disadvantaged Business Enterprise



# Procurement at rabbittransit

---

- Goods and services purchases range from office supplies to professional services to buses and construction
- Overarching procurement principles:
  - Full and open competition
  - Conformance with local, state and federal regulations
- Solicitations types depend on type of goods or services
  - Request for Proposals (RFP)
  - Invitations for Bids (IFB)
  - Request for Quotations (RFQ)

# Procurement at rabbittransit

---

- Get on the vendor's list by sending an email to [info@rabbittransit.org](mailto:info@rabbittransit.org)
- Current opportunities listed at <https://www.rabbittransit.org/about/requests-for-proposals/>



- **Replacement of an existing accounting software product with an enterprise resource planning (ERP) software product**
  - *Due July 28, 2025*
- **Regular maintenance, safety inspections, scheduled, and unscheduled repairs of automotive and heavy vehicle lift equipment located in Elysburg, Harrisburg, and York, PA**
  - *Due August 4, 2025*
- **Supply and support of a new, Class V, forklift**
  - *Due August 12, 2025*

# Procurement Requirements

---

- Procurement requirements can differ based on funding sources
- Common funding sources for rabbittransit:
  - Federal Transit Administration (FTA)
  - Commonwealth of Pennsylvania
- Federal requirements supersede state/local requirements
  - rabbittransit can often be more restrictive than Federal requirements, but not less
- Because the *Capital Region Operations & Maintenance Facility and Transfer Center* will be FTA-funded, Federal requirements will apply



# Process for Sealed Bidding

---

- Information on solicitation of bid packages will be posted on <https://www.rabbittransit.org/about/requests-for-proposals/>
  - All event attendees will receive a direct notification email
- Construction contracts are awarded to the lowest responsive, responsible bidder
- There will be an opportunity for submission of Questions related to the advertised packages
- Pre-bid meetings are commonly held for construction bids
- PennBid platform is anticipated to be used for bid management
  - <https://pennbid.net/>
  - Become familiar with the system!

# Davis-Bacon Requirements

---

- Also known as Federal prevailing wage requirements
- Required on Federally-funded construction contracts over \$2,000
- Wage determination rates from US Department of Labor will be included in each contract
  - Prevailing wages and fringes by labor category
  - Federal Davis-Bacon rates can differ from Pennsylvania Prevailing Wages
- Contractors required to submit certified payroll records on a weekly basis

# Buy America

---

- FTA's Buy America Requirement
  - 49 U.S.C. § 5323(j)(1) - Prevents FTA from obligating an amount that may be appropriated to carry out its program for a project unless "the steel, iron, and manufactured goods used in the project are produced in the United States"



# Build America Buy America (BABA)

---

- Build America Buy America – Included in the November 15, 2021 Infrastructure Investment and Jobs Act (IIJA or the Bipartisan Infrastructure Law)
  - Added domestic preferences for construction materials and additional procedures related to waivers
  - Construction materials include:
    - Non-ferrous metals
    - Plastic and polymer-based products
    - Glass
    - Fiber optic cable (including drop cable)
    - Optical fiber
    - Lumber
    - Drywall
    - Engineered wood

# Bonding Requirements

---

- **Federal Bonding Requirements (2 CFR 200.326)**
  - **Bid guarantee** from each bidder equivalent to **five percent of the bid price**. The bid guarantee must consist of a firm commitment such as a bid bond, certified check, or other negotiable instrument accompanying a bid as assurance that the bidder will, upon acceptance of the bid, execute any required contractual documents within the specified timeframe.
  - **Performance bond** on the contractor's part for **100 percent of the contract price**. A performance bond is a bond executed in connection with a contract to secure the fulfillment of all the contractor's requirements under a contract.
  - **Payment bond** on the contractor's part for **100 percent of the contract price**. A payment bond is a bond executed in connection with a contract to assure payment as required by the law of all persons supplying labor and material in the execution of the work provided for under a contract.

# Insurance Requirements

---

- Proposer must defend, indemnify, and hold harmless SRTA against all claims (except SRTA's sole negligence).
- Contractor must provide proof of insurance before any work begins.
- All insurance must be “occurrence” type policies.
- SRTA/rabbittransit/CPTA/CDH must be listed as “additional insured” on all policies.
- 30-day advance notice is required for cancellation or policy changes.



# Insurance Requirements

---

## Coverage Minimums:

Type	Minimum Coverage
General Liability	\$2,000,000 per occurrence, aggregate, and per category (incl. personal injury & advertising)
Automobile Liability	\$2,000,000 combined single limit; \$35,000 UM/UIM (not stacked)
Workers' Compensation	As required by PA law
Professional Liability (E&O)	\$1,000,000 per occurrence / aggregate
Valuable Papers	Amount sufficient to restore SRTA-related documentation
Cyber Liability	At least equal to total contract value (for data loss, breach, misuse, etc.)

# Small Business/Disadvantaged Business Requirements

---

- 2 CFR 200.321 - Contracting with small businesses, minority businesses, women's business enterprises, veteran-owned businesses, and labor surplus area firms.
  - When possible, ensure that small businesses, minority businesses, women's business enterprises, veteran-owned businesses, and labor surplus area firms are considered through following means:
    - ✓ Include on solicitation lists
    - ✓ Divide procurement transactions into separate procurements to permit maximum participation by these business types
    - ✓ Require a contractor under a Federal award to apply this section to subcontracts
- 49 CFR Part 26 – Disadvantaged Business Enterprise (DBE)
  - rabbittransit has an overall DBE goal of 2.5%
  - Need/capacity for a DBE goal will be determined for each bid package
    - ✓ Does not need to match overall goal
  - Part of the DBE program includes a focus on leveling the playing field for small businesses.

# Capacity Building

**Denise Bailey**  
Bailey White Solutions, LLC



# Key Compliance Considerations

---

- DBE Certification
- Marketing to/finding primes and subs
- Understanding where you fit in
- Important considerations in pricing the job (payment cycles, financing, wages, materials, magnitude)
- Scheduling/milestones/liquidated damages
- Supply chain
- Local resources

# Disadvantaged Business Enterprise (DBE) Regulation

---

- Federal Regulation (49 CFR Part 26 and Part 23) that apply to Federally-funded transportation contracts
  - Federal Transit Administration (FTA)
  - Federal Highway Administration (FHWA)
  - Federal Aviation Administration (FAA)
- Seeks to create a level playing field for ALL firms to successfully compete for Federally-funded contract opportunities
- Often includes setting DBE contract goals on solicitations
- To be counted towards those contract goals, firms must be 'certified' as a DBE

# Disadvantaged Business Enterprise Program

---

- Basic Certification Criteria
  - Firm must be owned and controlled by socially and economically disadvantaged individual(s)
    - Personal Net Worth cannot exceed \$2.047M
  - Firm must be small
    - Within Small Business Administration (SBE) North American Industrial Classification System (NAICS) code threshold (annual average over past 5 years)
    - For FTA and FHWA work also must be under \$30.74 M in average annual gross receipts (averaged over past 3 years)
  - Firm must be a 'going concern'
  - Firm must be able to perform work on a transportation-related project
- Business must be certified by its 'home' state first (based on business' primary location)



# Why Apply for Certification?

---

- Unlocks access to opportunities for your business
- It's free!
- DBE certification can be used to obtain other certifications (diverse business and small business certifications)
  - Other states
  - Small business designation
  - And more!
- Great marketing tool
  - Once certified, your firm is on a statewide electronic directory
- Access to technical assistance

# How to Apply

- For firms located in Pennsylvania, the Pennsylvania Unified Certification Program is the 'one-stop-shopping' location for DBE certification
  - <https://paucp.dbesystem.com/>
- The PAUCP uses an electronic portal into which answers to application questions and documents are entered/uploaded
  - This system also generates status emails and questions about your application
- 2 major application pieces
  - Uniform Application Form
  - Personal Net Worth Form
- To apply, click any of the logos



# To Find DBEs

- Only DBEs on this website can be used towards a DBE goal in PA.
- For projects with a DBE goal, search the same website.

Multiple criteria can be searched

The screenshot displays the search interface of the Pennsylvania Unified Certification Program. It features five main search categories, each with a header and a search input field:

- Search by Business Name or DBA:** Includes a text input field for "BUSINESS NAME/DBA" and a tip: "Tip: Try just a few letters of the firm's name."
- Search by Business Description:** Includes a text input field for "BUSINESS DESCRIPTION" and a tip: "Tip: Try just a few letters of a keyword."
- Search by Commodity Code:** Includes a text input field for "COMMODITY CODES" and a button labeled "Click to Lookup Commodity Codes".
- Search by Contact Person:** Includes two text input fields for "First Name" and "Last Name", both with tips: "Tip: Use the first few letters."
- Search by Location:** Includes a text input field for "CITY", a text input field for "ZIP CODE", and a tip: "Tip: Search for multiple zip codes by separating with commas." Below these is a "DISTANCE SEARCH" section with a dropdown for "Within 5 miles" and a text input for "of zipcode".

The screenshot shows the homepage of the Pennsylvania Unified Certification Program. At the top, the title "Pennsylvania Unified Certification Program" is displayed. Below the title, there is a blue box containing information about the directory and a disclaimer. A red arrow points from the top of the page down to the "Search for Certified Firms" button in the "Vendor Certification" section.

**Vendor Certification**  
Search our database of DBE/ACDBE certified vendors  
[Search for Certified Firms](#)  
[Additional Info](#)

**Get DBE Certified or Manage your DBE Certification**  
Click on a partner logo to apply or manage (e.g. request code expansion, submit annual affidavit) your certification. If your firm is applying for the first time, you may apply with any of the certifying partners listed below. Previous applicants must submit to the partner you originally applied with.

**System Training**  
Learn how to fully utilize our system with a live trainer  
[Training and Events](#)

**About the System**  
Welcome to the Pennsylvania State Unified Certification Program (PAUCP) Certification Portal! The PAUCP is responsible for DBE/ACDBE certification in the state of Pennsylvania and provides firms with "one-stop" shopping. To apply for DBE/ACDBE certification you may contact any one of the five PAUCP Certifying Partners - SEPTA, Pennsylvania Department of Transportation, Allegheny County, Philadelphia International Airport, and Pittsburgh Regional Transit - by clicking on their logo.

**Logos:**  
ALLEGHENY COUNTY  
pennsylvania DEPARTMENT OF TRANSPORTATION  
PHL PINE  
PRT Pittsburgh Regional Transit  
SEPTA

# Marketing To/Finding Primes and Subs

- Stay connected - today is a great start for these projects
- Use PA's DBE directory to find small and diverse firms
- Attend pre-bid meetings
- Use platforms (like PennBid)
  - Most (like PennBid) are free to vendors
  - They often list 'planholders' and awardees (when awarded)
- Stay in touch with procurement personnel

Award Notices:			
Vendor	Date Awarded	Value	Actions
Caddick Utilities LLC	Jun 20th 2025, 10:30 AM EDT	\$415,294.00	<a href="#">View Award</a>

Document Takers		
<input type="text" value="Search"/>		
Vendors	# Files	Actions
A.H. Cornell and Son Inc.	2	<a href="#">View</a>
AKC mechanical	1	<a href="#">View</a>
Anrich Inc.	2	<a href="#">View</a>
ascdly	3	<a href="#">View</a>
Associated Paving Contractors, Inc.	1	<a href="#">View</a>
Barraso Excavation, Inc.	1	<a href="#">View</a>
BBR Printers	6	<a href="#">View</a>
BuildCentral Inc.	9	<a href="#">View</a>
C&R Directional Boring, LLC	2	<a href="#">View</a>



# Understand Where You Fit In

---

- For small firms
  - Are you findable?
  - Have you obtained your own knowledge of the details of an active bid?
  - Can you communicate a distinct area of work where you add value?
  - Can you demonstrate that you are ready?
  - Are you reachable through various means (especially close to bid date)?
  - Do you connect outside of an active bid?
- For primes
  - Are the right personnel on your team findable?
  - Do you give honest feedback?
  - Can you de-mystify your process?



# Pricing Considerations

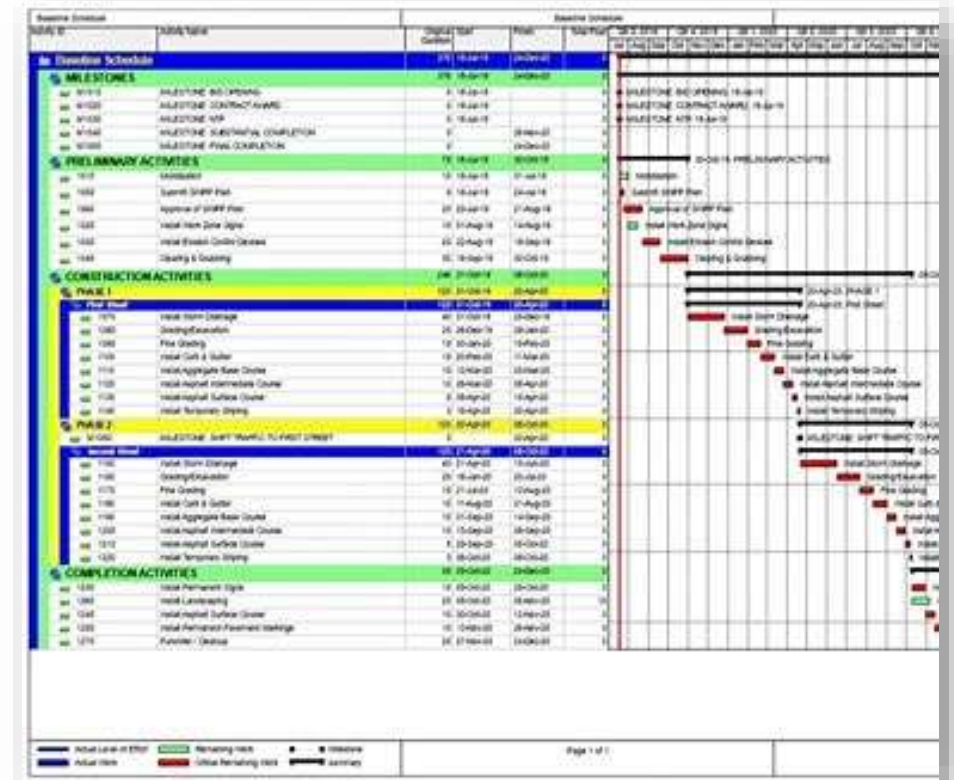
---

- Davis Bacon Wages/Fringes – determinations will be in the bid packages for each contract
- Payment cycles – weekly wage payments/supplier payments vs. agency/prime payment cycles
  - Can drive financing needs
- Retainage
- Federal prompt payment and return of retainage requirements
- Materials
  - Buy America/BABA
  - Market conditions
  - Availability
- Bonding
- Insurance



# Schedule Considerations

- Project schedule and milestone adherence
- Submissions and reviews
- Progress meetings
- Timing of materials
- Phasing in tight sites
- Impacts on (and from) other projects
- Liquidated damages
- DBE commitment requirements



# Support Networks: Compliance and Resources

---

- FTA has high expectations for compliance monitoring of the projects it funds:
  - Buy America/BABA
  - Project scope and timing
  - DBE
  - Prompt payment of subcontractors
  - Contract and subcontract language
- Harrisburg region has a number of business resources
  - Management/technical assistance
  - Financial assistance
  - Find and connect with them before you need them



# Closing Remarks/ Questions/Networking

## **Yes! We will :**

- Distribute the attendee list from today
- Post the presentation on our website
- Contact attendees when the packages are out for bid

**Please** stop by the registration desk if you did not confirm your email address when you arrived.